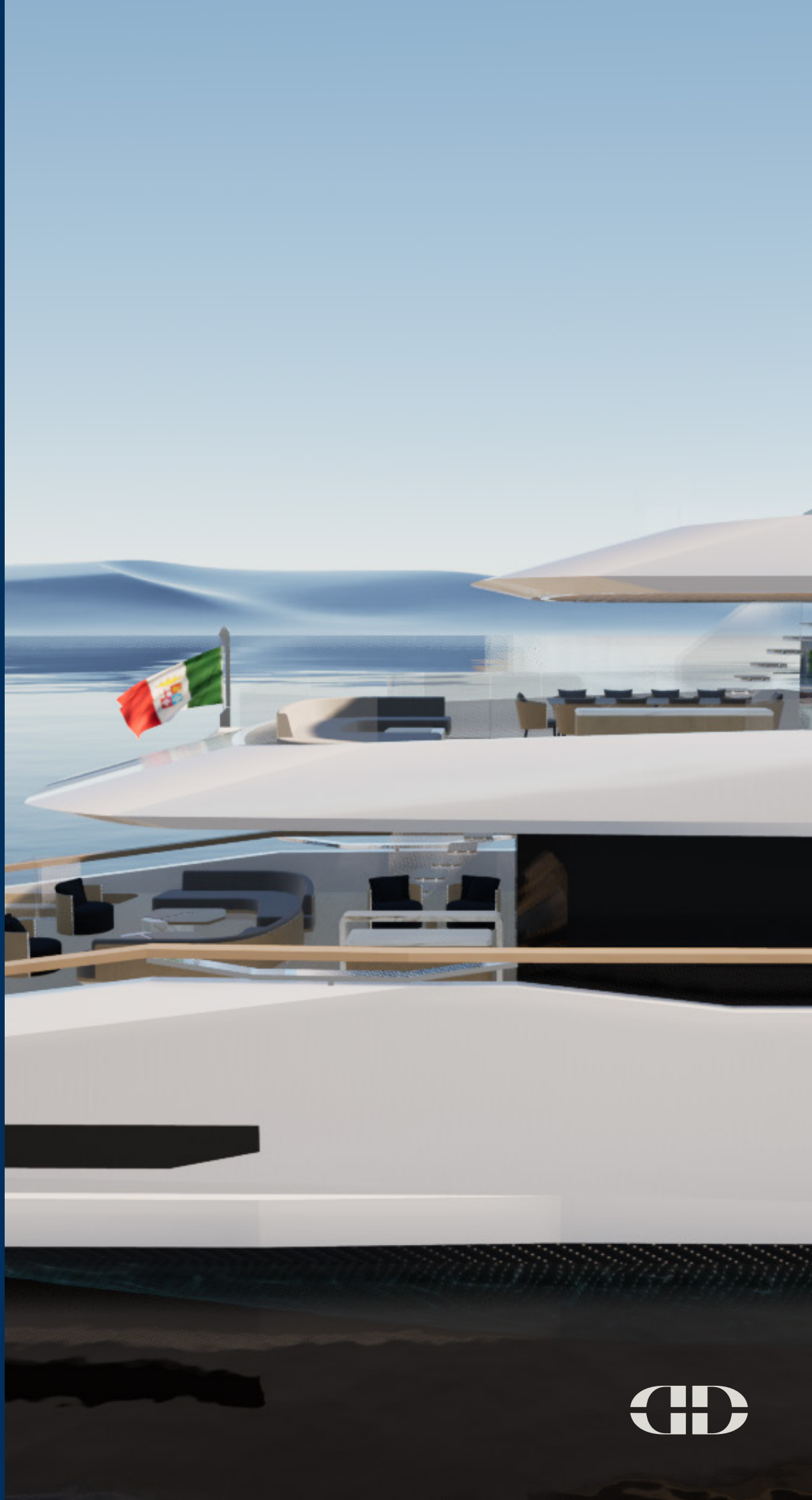


TUREGDI



52

Sleek



## Exterior Design

---

The 52m “Sleek” doesn’t just enter the nautical landscape; it defines it. Its lines are a perfect blend of elegance and character, marking a new distinction in yacht design. Every aesthetic detail has been crafted to guarantee a unique identity and instant recognition. With its unmistakable silhouette, it is destined to leave an indelible mark.



Guest: 10 (+ 2 pullman bed)  
 Crew: 9  
 Pool: 1 Platform  
 Jacuzzi: 1 Sun Deck fwd  
 Tender: 6,5 m guest - 5,0 m crew - jetskis

### Displacement MotorYacht

Hull construction: Steel  
 Superstructure: Aluminum

### Tank Capacities

Fuel: 60000L  
 Gray Water: 9000L  
 Black Water: 8000L  
 Fresh Water: 14000L

### Navigation System and Communication:

3 x 21" LCD monitors at the wheelhouse  
 Touch-panels for radar, echo-sounder, chart plotter, log, GPS, automation  
 Multifunction station with trackball & joystick  
 Furuno Radar, Internal Intercom, Navtex receivers, EPIRB, radar transponder  
 Autopilot, alarm & monitoring, VHF screen  
 Satellite system Starlink

### Safety

Monitoring system with Surveillance cameras, intrusion alarm, fire detection system

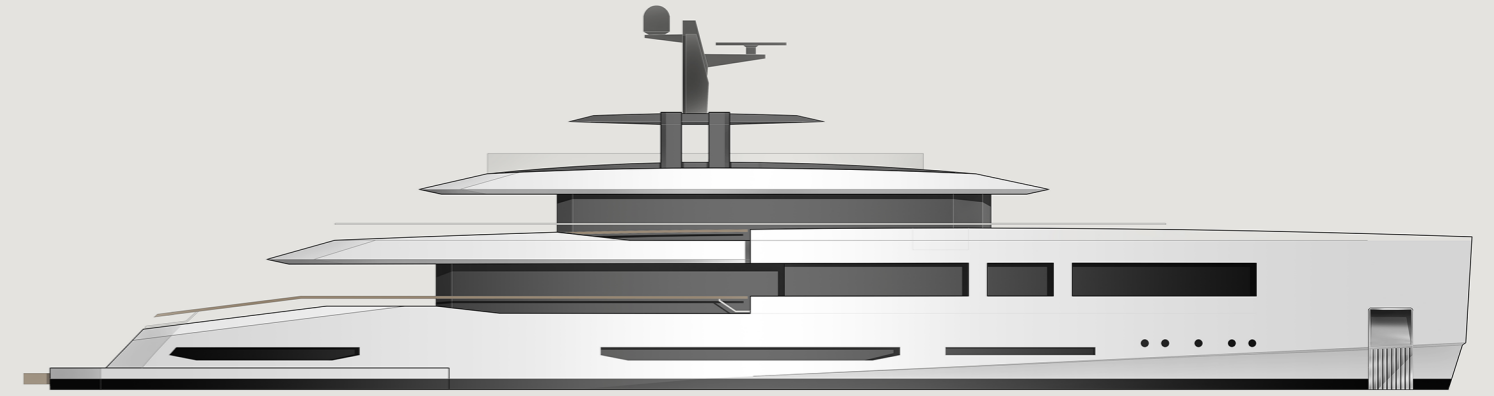
### Comfort and amenities

HVAC centralized climate control system  
 1 fwd exterior Jacuzzi with BBQ and dining table at Sun Deck  
 1 pool in the Aft Terrace  
 1 Wellness area with Sauna and Hammam  
 2 Shell doors in the wellness area

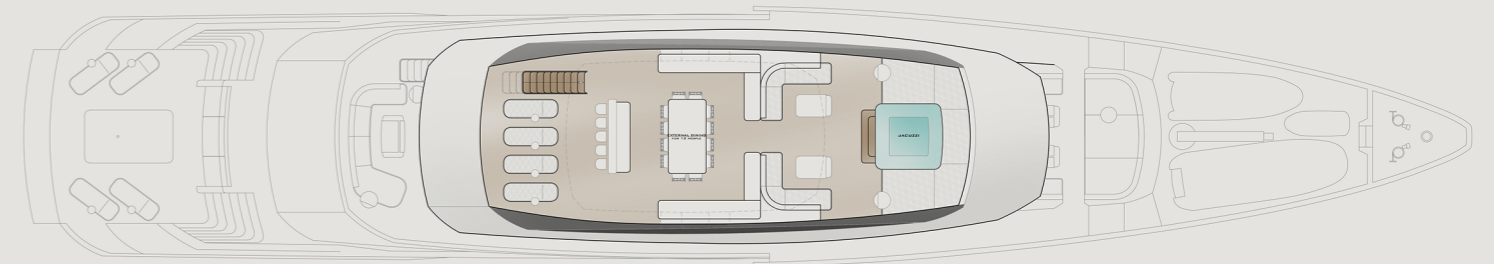
Exterior Design: 3-studio  
 Interior Design: 3-studio



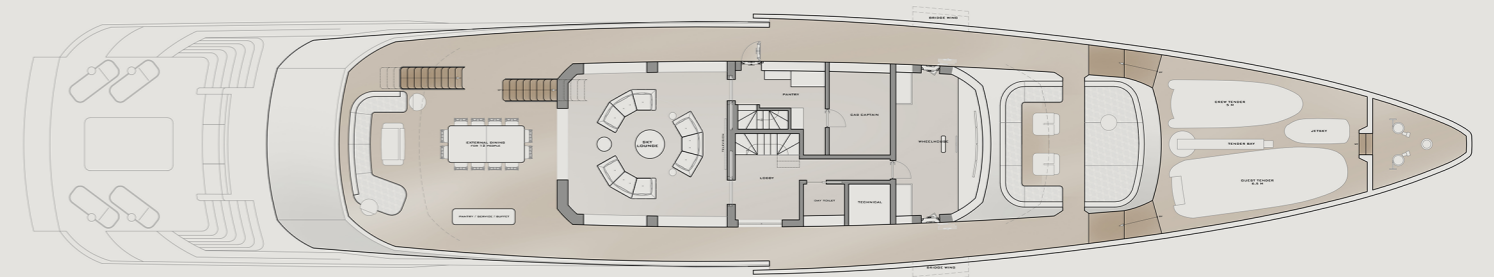
Profile



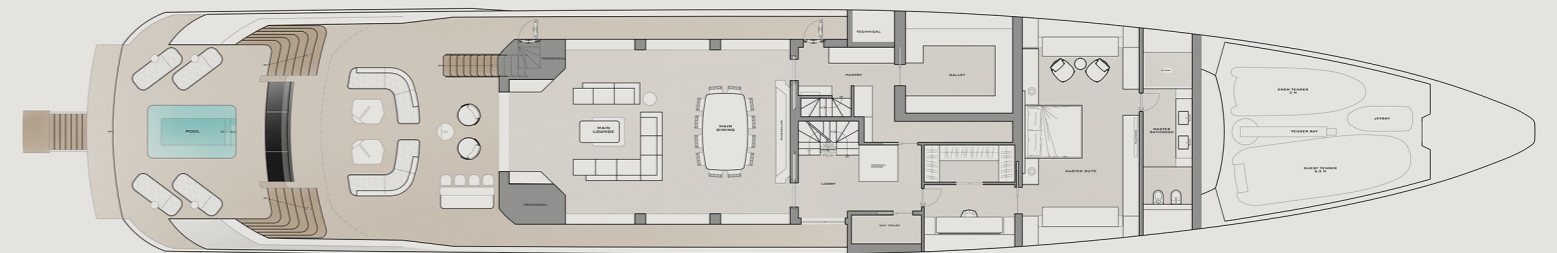
Sun Deck



Bridge Deck



Main Deck



Lower Deck





## External Areas

The external areas were designed to enhance the experience of life on board. The versatility of the spaces, spread across various decks, integrates perfectly with the daily use of the yacht, offering a multitude of functions.

The spectacular aft pool area serves as an elegant entrance to the indoor wellness space, creating a majestic and visually striking environment. On the sundeck, every desire for entertainment and relaxation is fulfilled, with a 360-degree view that extends to the horizon. Lounge areas, relaxation zones, and dining spaces complete the experience, transforming the dream of living on the sea into a magnificent reality.

## Dimensions and Capacity Overall

LOA	52,0m
LWL	51,3m
BOA	9,2m
Draft	2,5m
GT	499

## Propulsion

Engines:	2 x MTU 8V 4000 M63
Maximum Speed:	15 knots
Cruising Speed:	13 Knots
Range:	4500nm @10Kn
Certification:	Rina Class

# Bespoke projects constructed by a name that shaped yachting history

The Tureddi brand emerges from a family enterprise, representing Andrea Tureddi's lifelong dedication to yacht building. Andrea stands out as a pivotal figure among the cohort of yacht builders, entrepreneurs who shaped the Italian yachting scene from the 1960s through to the 1990s. His remarkable skills played a significant role in founding the yacht construction sector along the Tyrrhenian coast, especially in Viareggio, now renowned for its premier Italian luxury yacht manufacturing.

Alessandro Tureddi, the current Chairman of Tureddi Yachts, represents the family's newest generation. He has infused the company with fresh energy, shifting its focus towards a novel approach of producing and directly marketing bespoke projects. Alessandro established the group in 2020, aiming to position it as a comprehensive force in the luxury yachting arena.

The expertise and craftsmanship of both Andrea and Alessandro Tureddi, supported by their seasoned teams - the same teams that have been constructing hulls and superstructures for over three decades - along with a reliable and eco-friendly supply chain, have enabled the company to embark on a journey of growth and diversification in production. The group's objective is to broaden its reach both within Italy and internationally, aspiring to be a global contender.



With this ambition, Alessandro moved the Corporate business to London and laid the groundwork for a new real estate venture in the United Kingdom, which will aid in establishing new manufacturing facilities in the Mediterranean region. At the core of his vision lies a profound expertise, meticulous attention to detail, and stringent quality standards, ensuring the shipyard meets client demands with outstanding and innovative offerings.

Drawing from the solid experience gained over the years in supplying components that enabled the first generation to craft finished boats for thirdparties, ranging from Superyachts to racing motorboats, and including the refit of historic sailing boats like the S/Y Invader, the group decided to establish its ownbusiness.

In collaboration with renowned architects, they set out tocreate their signature products.

# Milestones of a

# Timeless Journey



## 1980s THE ROOTS

Years of apprenticeship and steel discipline, when a small workshop was born. Not just building structures, but shaping the shipyard's identity.

## 1990s THE PETROCHEMICAL GIANTS

Large petrochemical projects defined the decade, demanding scale, strength, and precision. Reputation grew as resilience and teamwork took centre stage.

## 2000s FROM STEEL TO STYLE

The leap into motor yachts: steel's strength met elegance and design. Engineering evolved into craftsmanship and style.

## 2000s REVIVING LEGENDS AT SEA

Refit projects brought timeless classics back to life, like the legendary Invader. A blend of precision, passion, and respect for history.

## 2000s CRAFTING ICONS FOR LEGACY YARDS

Partnerships with renowned Italian shipyards led to hulls and superstructures of uncompromising quality. Craftsmanship became part of a greater legacy.

## 2010s BUILDING FOR THE WORLD

From modules to complete yachts: the first "turnkey" deliveries demonstrated excellence on a global scale. A milestone in the shipyard's evolution.

## 2010s PRECISION IN STEEL

Complex hulls and superstructures confirmed mastery in steel. Each project a the backbone of world-class yachts.

## 2010s TURNKEY CREATIONS

Full yacht construction became reality, managing every stage from start to launch. Proof of maturity and ambition achieved.

## 2010s A NEW LINE, A NEW VISION

A generational handover brought the birth of Tureddi. Heritage and innovation united to set a bold course for the future.

## 2020s THE TUREDDI BRAND

With the launch of our own brand, we became creators of yachts that carry our name. Tureddi embodies continuity and renewal: past strength reimagined for the future.



---

## UK CORPORATE DIVISION

110 Mount Street, Mayfair, W1K 2TS  
London, United Kingdom

## ITALIAN PRODUCTION SITE

Viale Ugo Foscolo 3, 55049 Viareggio (LU)  
Via di Nugolaio snc, 56121 Pisa

---

## CONTACT

+44 (0)7586 184515  
sales@tureddigroup.com

[www.tureddigroup.com](http://www.tureddigroup.com)

