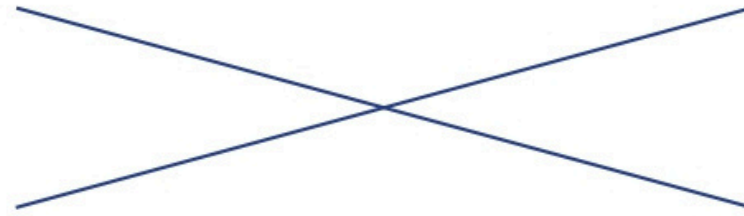




TUREGGI

Project Noon_52

TUREGDI





ArDeMo YACHT & DESIGN

ArDeMo Yacht&Design is a division of ArDeMo Firenze coordinated by the co-founder Leonardo Cecchi, a florentine yacht designer.

ArDeMo is a multidisciplinary office made by 3 different independent macro areas, Architecture / Design / Modelling, which are operating in 3 different design fields from 2018, in order to give to every customer a complete support thanks to the 3 co-founders' various working experiences and the interaction between the different professional skills of employees inside and outside the group.

Thanks to the experience gained in yacht design, started in 2010 and including production assistance, interior/exterior technical design and concept design for several Italian shipyards, the team takes care of the complete design development of sailing and motor yacht driven by the spirit of technical research and innovation helped by the knowledge of the latest software 2D and 3D dedicated to design.

ArDeMo YD is totally committed in the realization of yacht& interior design projects with the aim of transforming the dreams of the customer and his emotions in innovative reality that can last a long time.



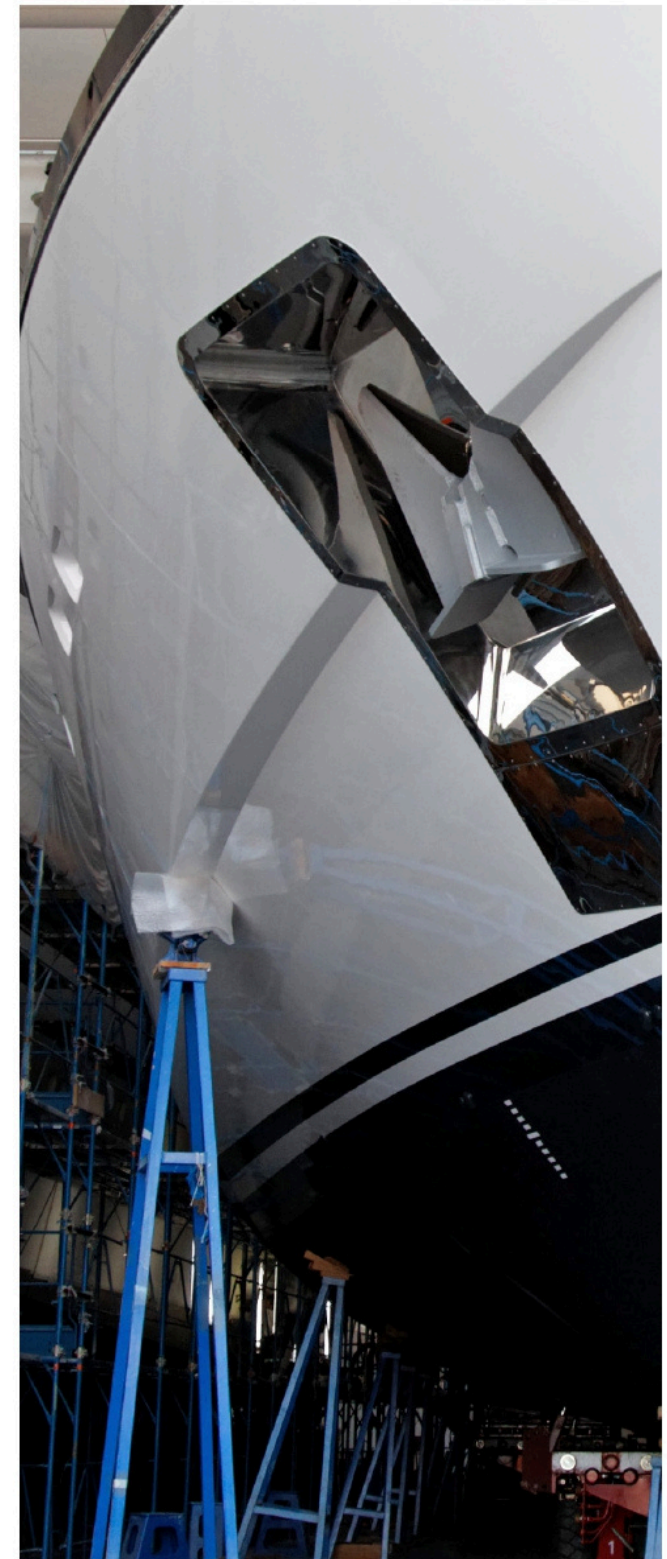
TUREGGI

Drawing from the solid experience gained over the years in supplying components that enabled the first generation to craft finished boats for third parties, ranging from Superyachts to racing motorboats, and including the refit of historic sailing boats like the S/Y Invader, the group decided to establish its own business. In collaboration with renowned architects, they set out to create their signature products.

Our shipyard represents a unique fusion of British corporate governance and Italian craftsmanship. Based in the UK, our company adheres to the stringent standards, legal frameworks, and procedural rigor characteristic of British corporate entities.

Despite our UK domicile, the soul of our yachts is quintessentially Italian. We proudly produce our vessels in Italy, leveraging the country's storied tradition of yacht construction and its reputation as a world hub of yachting. Our yachts are crafted in the renowned shipbuilding areas of Viareggio and Pisa, where the Italian flair for design and luxury is evident in every curve and contour.

TUREGGI

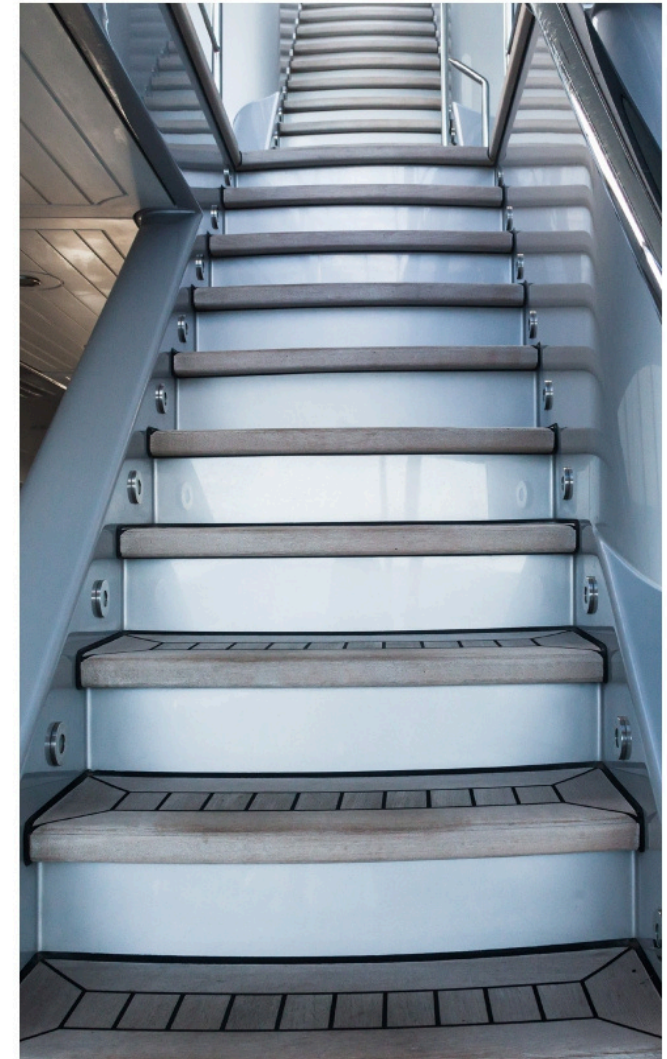


By marrying the Italian passion for aesthetics and attention to detail with the British ethos of corporate excellence, we create yachts that are not only visually stunning but also built to the highest standards of quality and performance.

The 'Made in Italy' label is a testament to the unparalleled craftsmanship and innovative spirit that goes into each of our yachts, ensuring that they resonate with the luxury and sophistication that clients expect from Italian-built vessels.

Tureddi is upholding the highest standards of both British business practices and Italian yacht-building heritage.

We welcome you to consult us for the development of your superyacht custom projects.





PROJECT Noon 52

Motor yacht



Exterior : Leonardo Cecchi - ArDeMo Y&D

Interior : Leonardo Cecchi - ArDeMoY&D

Length : 52 m

Length at waterline : 48 m

Width, maximum (over-all) : 10.3 m

Beam : 10.6 m

Draft : 2.7 m

Displacement : Full displacement

Guests	Crew	Cabins	Decking	Decks
12	10 + 1	6 + 1	teak	4 + 1



52m

About

NooN 52 is a 52m steel and aluminium motor yacht that combines shape and function creating an elegant and flowing design.

The internal layout features 4 double guest cabins on the LD, a spacious salon with dining area aft on the MD and a media room on the UD.

Forward on the MD, two mirror master cabins with private terrace can be modified in a single owner area according to the requests. The external areas are designed to maximize the contact with the sea.

The rigour of internal layout is opposed to the softness and the sinuous of the external shapes that are created from the movement of the slow and long sea waves, that lull the navigator.

From a technical point of view, NooN 52 features a spacious engine room that can also accommodate hybrid propulsion systems according to the client's requests and needs.

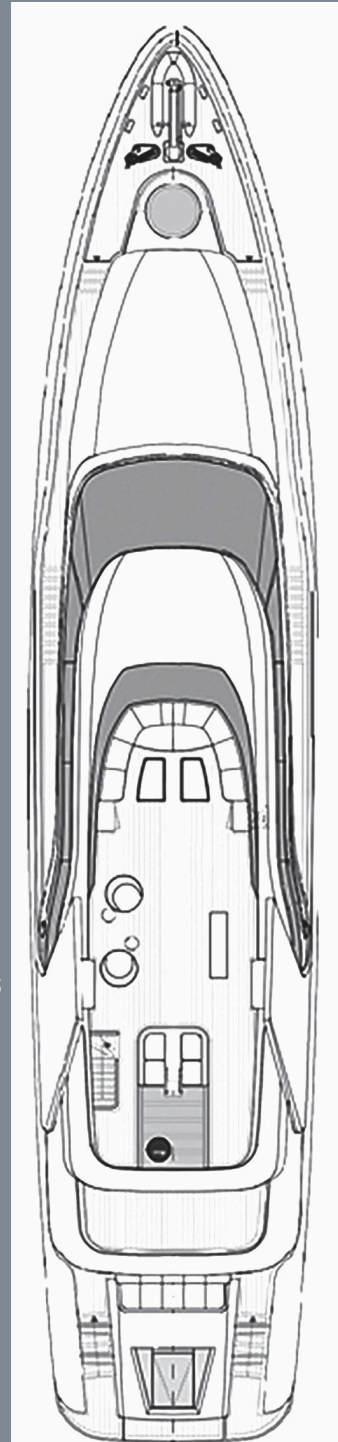
The choice of aluminium allows optimal performance in navigation with low consumption and a greater autonomous operation that can be implemented with the integration on board of the hydrogen fuel cell technology diesel/electric to ensure a "zero-emission" navigation.

NooN 52 can accommodate 12 guests in six cabins.

The privacy of each guest is guaranteed by the study of separate routes between guests and crew.

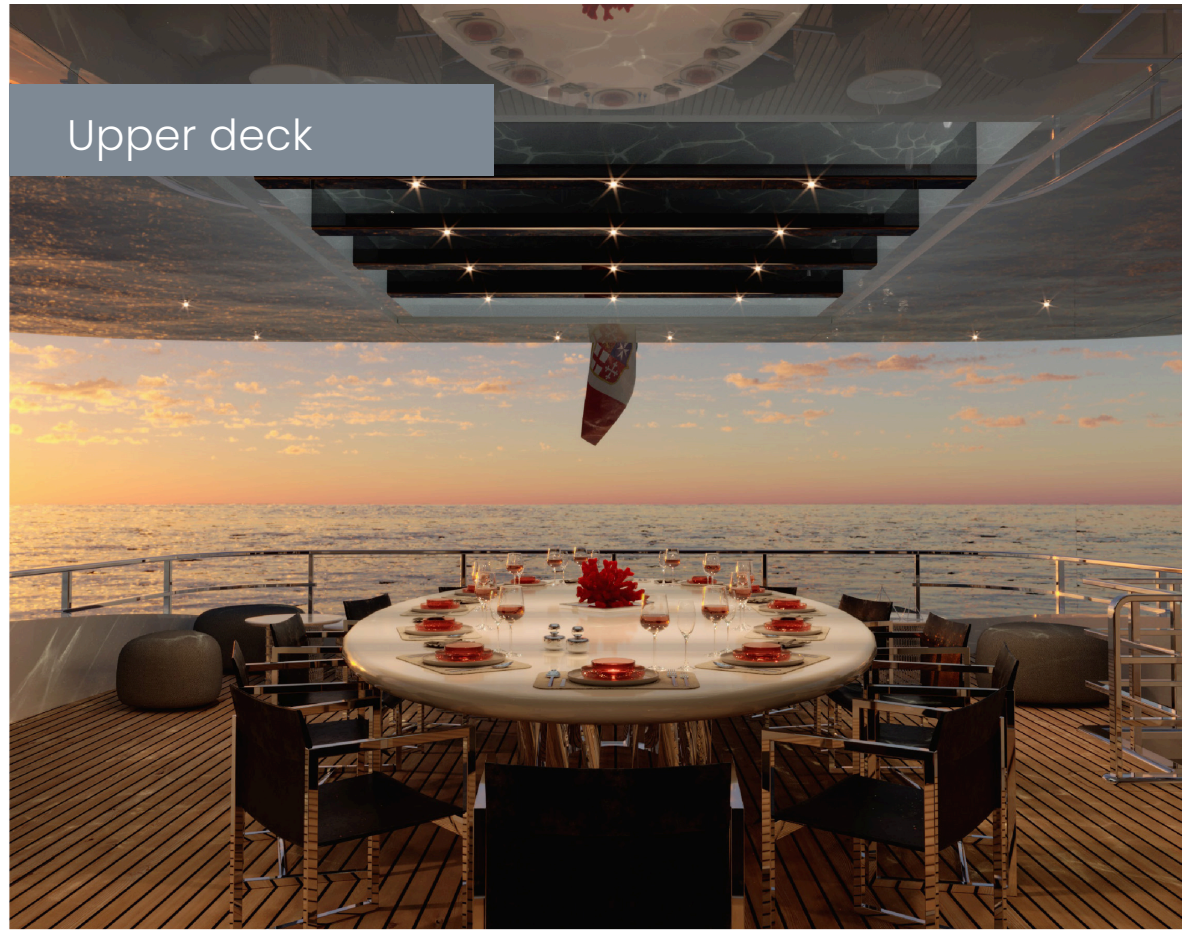


**...yacht
that
combines
shape
and
function
creating
an
elegant
and
flowing
design.**





Sun deck



Upper deck





Type of engine : Diesel / MAN V 12 (x2) TBC

Main generators : Kilo-Pak, 99kW each (x2) TBC

Bow thruster : HRP 90kW, TBC

Stabilisers : Naiad Dynamics, TBC

Maximum speed at 1/3 load : 19,00 knots ($\pm 0,5$ kn)

Cruising speed : 15 knots ($\pm 0,5$ kn)

Range at cruising speed : 3,500 NM

Range at 12 kts economical cruising speed : 6,000 NM

Gross tonnage : approx. 499t



Approximate tank capacities / Litres

Fuel : 105,000

Fresh water : 19,000

Gray water : 5,000

Black water : 3,500

Bilge separator tank : 1,000

Clean lube oil : 400

Sludge oil : 400

Hydraulic oil : 200

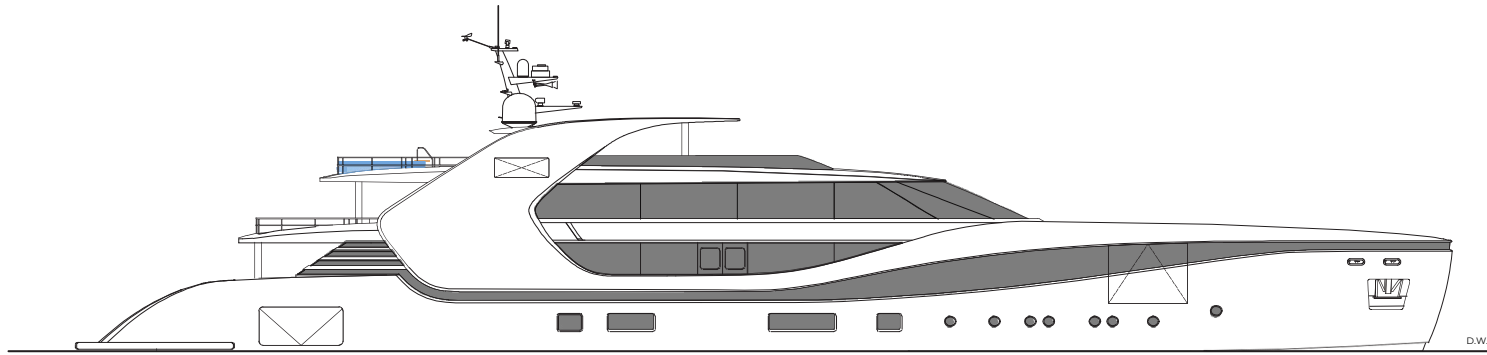


VIP cabin



VIP bathroom

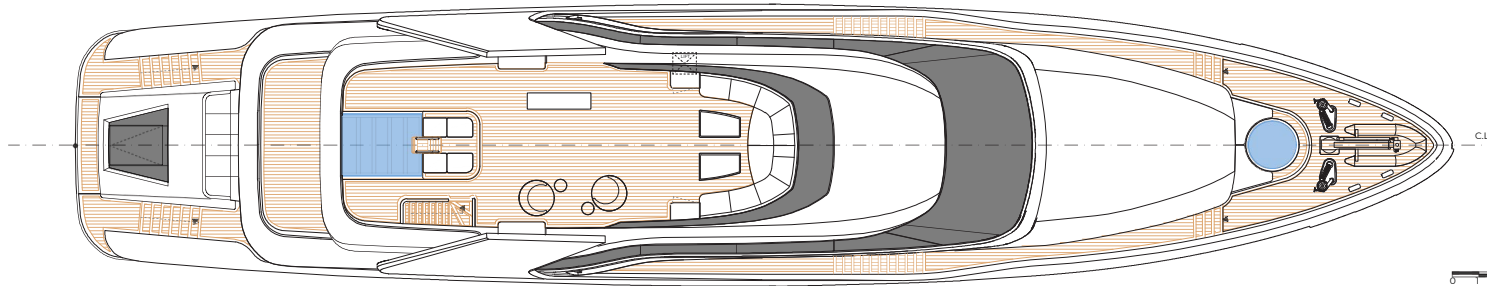




DWL



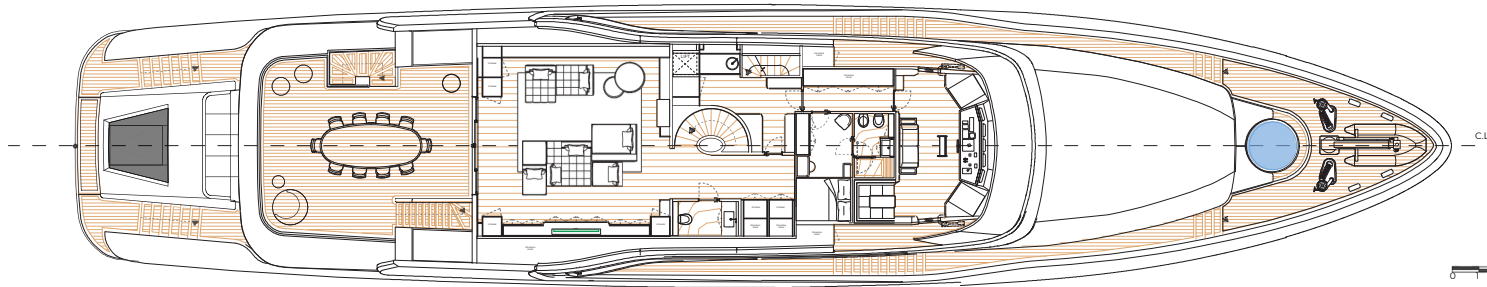
0 1 2 3 4 5 6 7 8 9 10 11 12 13 14 15 16 17 18 19 20 21 22 23 24 25 26 27 28 29 30 31 32 33 34 35 36 37 38 39 40 41 42 43 44 45 46 47 48 49 50 51 52



CL



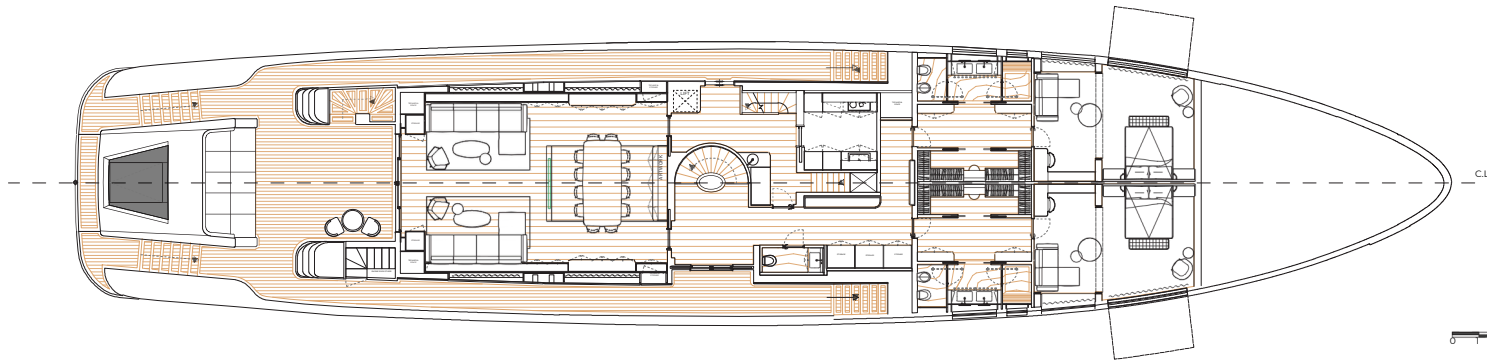
0 1 2 3 4 5 6 7 8 9 10 11 12 13 14 15 16 17 18 19 20 21 22 23 24 25 26 27 28 29 30 31 32 33 34 35 36 37 38 39 40 41 42 43 44 45 46 47 48 49 50 51 52



CL



0 1 2 3 4 5 6 7 8 9 10 11 12 13 14 15 16 17 18 19 20 21 22 23 24 25 26 27 28 29 30 31 32 33 34 35 36 37 38 39 40 41 42 43 44 45 46 47 48 49 50 51 52

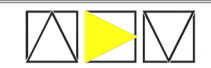


CL



0 1 2 3 4 5 6 7 8 9 10 11 12 13 14 15 16 17 18 19 20 21 22 23 24 25 26 27 28 29 30 31 32 33 34 35 36 37 38 39 40 41 42 43 44 45 46 47 48 49 50 51 52

Rev.	Date	Note	Drawn by



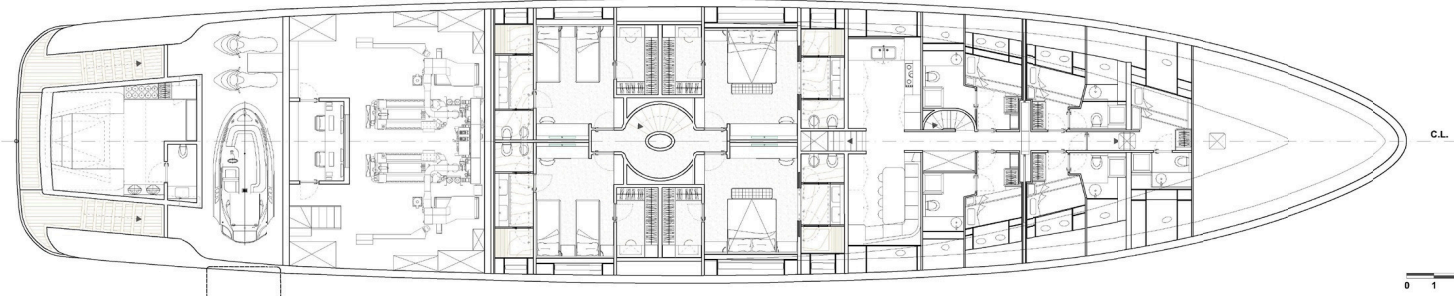
ArDeMo Yacht + Design - Via Calandrino, 6R Firenze - +39 339 5018584 - leonardo@ardemo.it

Noon52_00

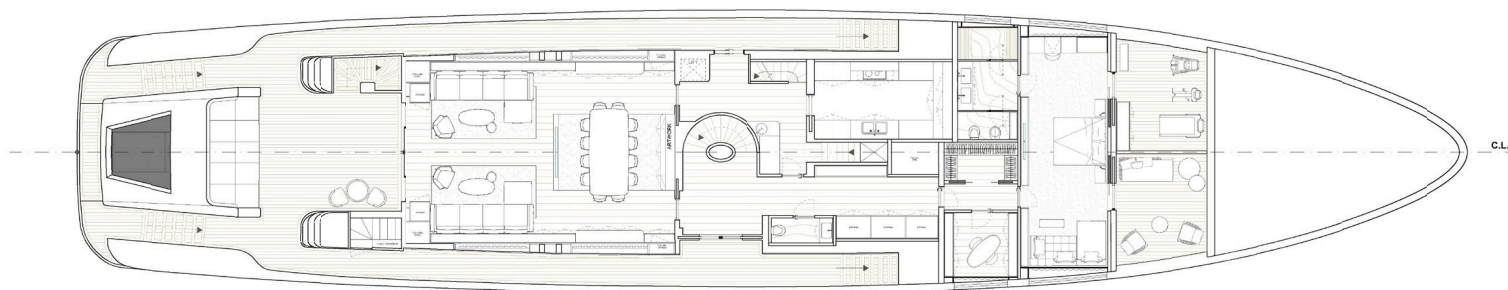
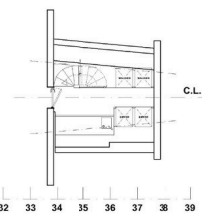
File name	Paper Size	Date	Scale	Drawn by	Checked by
Noon52_00_gnp00 sheet 1/2	ISO A1 841x594 mm	01.12.2021	1/100	L.Cecchi	L.C.

DI QUESTO DISEGNO E' VIETATA LA RIPRODUZIONE, LO SFRUTTAMENTO O LA COMUNICAZIONE A TERZI - TUTTI I DIRITTI SONO RISERVATI
REPRODUCTION OR COMMUNICATION OF THIS DRAWING TO THIRD PARTIES IS STRICTLY FORBIDDEN - ALL RIGHTS ARE RESERVED

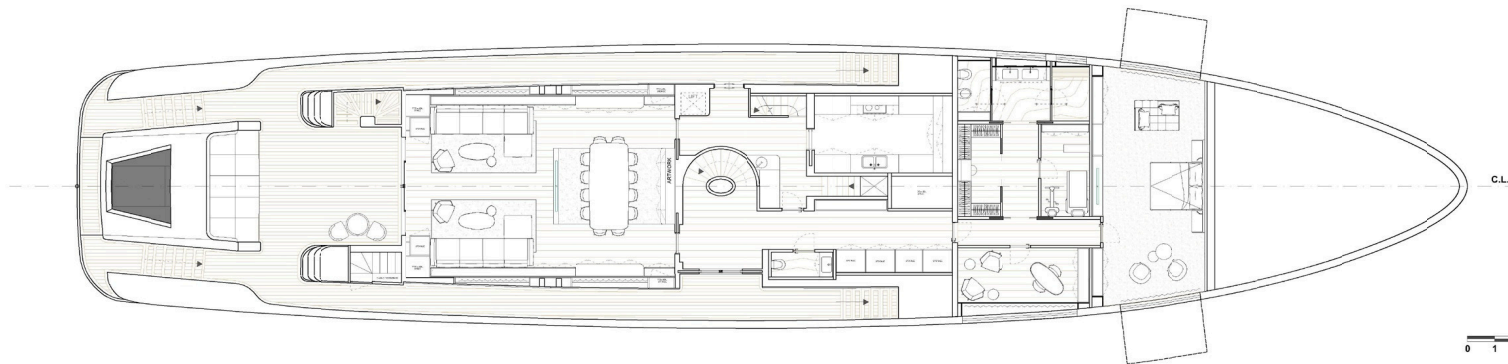
0 1 2 3 4 5 6 7 8 9 10 11 12 13 14 15 16 17 18 19 20 21 22 23 24 25 26 27 28 29 30 31 32 33 34 35 36 37 38 39 40 41 42 43 44 45 46 47 48 49 50 51 52



0 1 2 3 4 5 6 7 8 9 10 11 12 13 14 15 16 17 18 19 20 21 22 23 24 25 26 27 28 29 30 31 32 33 34 35 36 37 38 39 40 41 42 43 44 45 46 47 48 49 50 51 52



0 1 2 3 4 5 6 7 8 9 10 11 12 13 14 15 16 17 18 19 20 21 22 23 24 25 26 27 28 29 30 31 32 33 34 35 36 37 38 39 40 41 42 43 44 45 46 47 48 49 50 51 52



0 1 2 3 4 5 6 7 8 9 10 11 12 13 14 15 16 17 18 19 20 21 22 23 24 25 26 27 28 29 30 31 32 33 34 35 36 37 38 39 40 41 42 43 44 45 46 47 48 49 50 51 52

Rev. Date Note Drawn by



ArDeMo Yacht + Design - Via Calandrinio, 6R Firenze - +39 339 5018544 - leonardo@ardemo.it

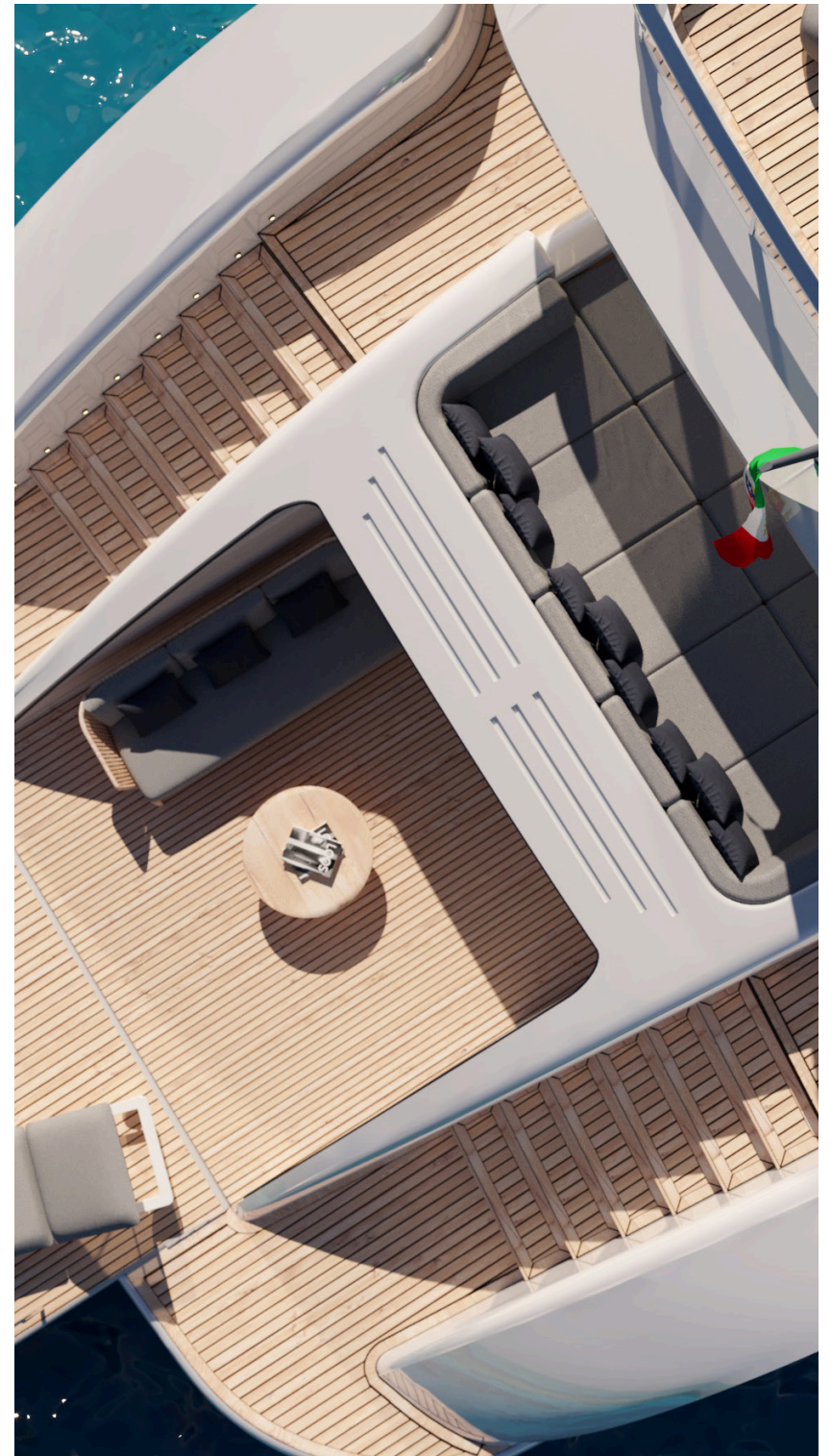
Noon52_00

File name	Page Size	Date	Scale	Drawn by	Checked by
Noon52_00_gnp00	ISO A1 841x594 mm	01.12.2021	1/100	L.Cecchi	L.C.
sheet 1/2					

DI QUESTO DISEGNO E' VIETATA A RIPRODUZIONE, L'OSFRUTTAMENTO O LA COMUNICAZIONE A TERZI - TUTTI I DIRITTI SONO RISERVATI



All information in this brochure, including technical or performance data, images and drawings, are designer's exclusive property and should be considered as simple indications previously verified with some experts in the sector. These features, without contractual value, refer to the motoryacht model presented following specific technical and formal designer's decisions. This document is based on the information available at the time of its publication. Despite our best efforts to ensure the highest possible accuracy, the information contained here may not cover all details and any changes introduced after printing or could describe features not totally achievable.



TUREDDI

UK Corporate Division

7-10 Chandos Street, Cavendish Square
W1G 9DQ London, United Kingdom
Phone: +44 (0)7553 291162
E-mail: sales@tureddigroup.com

Italian Production Site

Viale Ugo Foscolo 3 - 55049 Viareggio (LU) Italy
Via di Nugolaio snc, 56121 Pisa Italy
Phone: +39 050 6230314
E-mail: info@cntgroup.it