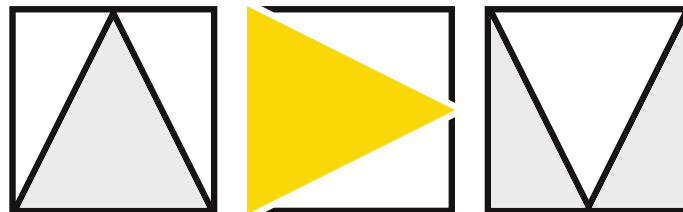
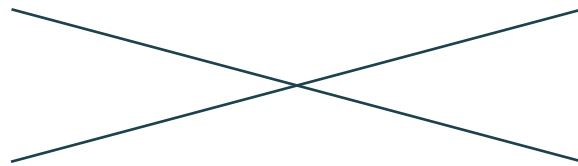


A luxury yacht is shown from a side profile, floating on a dark sea under a twilight sky. The yacht has a white hull with a dark upper section and a wooden deck. The word 'TUREGGI' is overlaid in large, white, serif capital letters across the center of the image. The letters are semi-transparent, allowing the yacht's details to be seen through them.

TUREGGI

Project Noon 52

TUREDDI



Tureddi partners with ArDeMo Yacht & Design on Project Noon 52



ArDeMo YACHT & DESIGN

ArDeMo Yacht&Design is a division of ArDeMo Firenze coordinated by the co-founder Leonardo Cecchi, a florentine yacht designer.

ArDeMo is a multidisciplinary office made by 3 different independent macro areas, Architecture / Design / Modelling, which are operating in 3 different design fields from 2018, in order to give to every customer a complete support thanks to the 3 co-founders' various working experiences and the interaction between the different professional skills of employees inside and outside the group.

Thanks to the experience gained in yacht design, started in 2010 and including production assistance, interior/exterior technical design and concept design for several Italian shipyards, the team takes care of the complete design development of sailing and motor yacht driven by the spirit of technical research and innovation helped by the knowledge of the latest software 2D and 3D dedicated to design.

ArDeMo YD is totally committed in the realization of yacht& interior design projects with the aim of transforming the dreams of the customer and his emotions in innovative reality that can last a long time.



TUREGGI

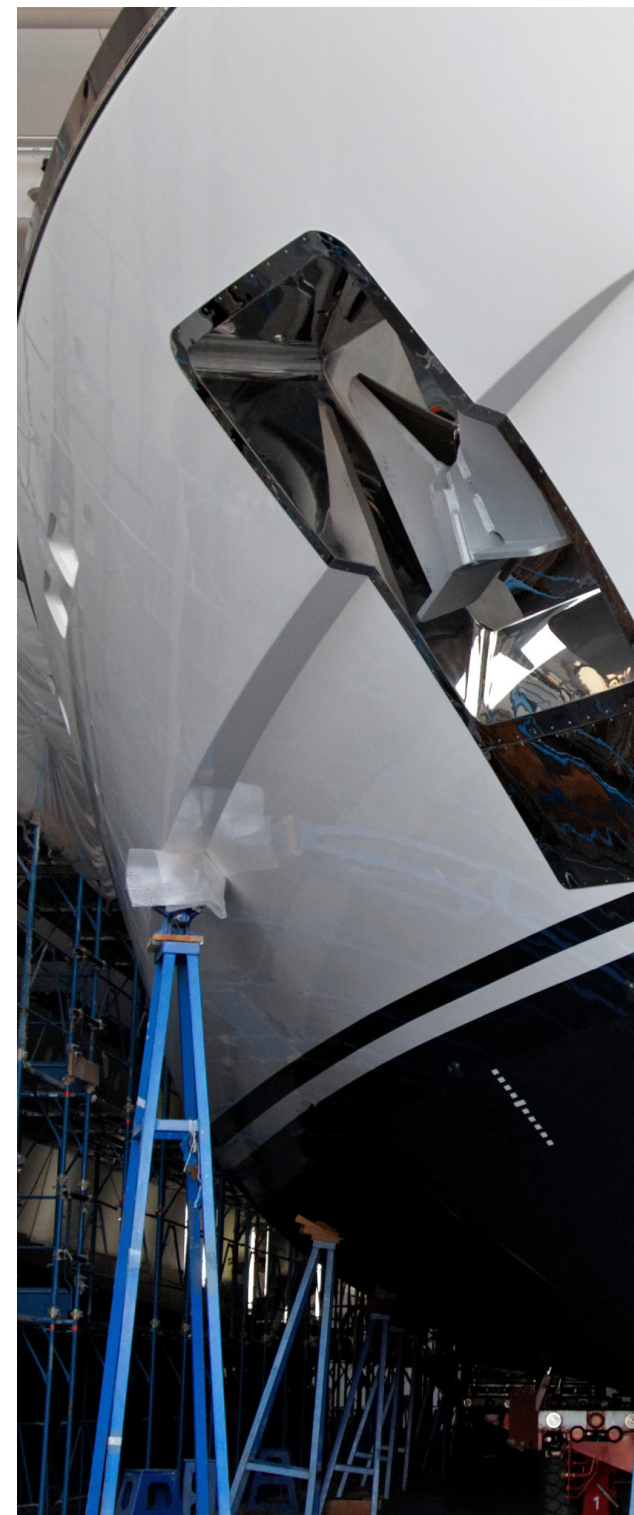
Tureddi brand is a family business and represents the culmination of Andrea Tureddi's lifetime career.

Andrea is one of the most interesting and creative examples of that group of yacht builders/entrepreneurs who made the history of Italian yachting between the 60s and the 90s. With his talent and ability, Andrea was one of the catalysts in the establishment of the yacht-building industry on the Tyrrhenian coast, particularly in Viareggio, which is now considered the excellence of Italian luxury yachting production.

Alessandro Tureddi, current President of Cantieri Navali Tureddi Group S.p.A., is the latest generation of the family. He brought new vigour to the company, changing the business paradigm to embrace a new production model that sees their shipyard producing and selling complete custom projects directly to the market. Alessandro founded the group in 2020, with the intention of making it an all-around player in luxury yachting.

The professionalism and the skills of both Tureddi, father, and son, together with their experienced teams of workers, the same with which they have built hulls and superstructures for the last 35 years, and the availability of an efficient and sustainable supply chain, have made possible the start of a process of expansion and production differentiation.

TUREGGI



The group's aim is to expand in Italy and outside, keen to become an international player. With this in mind, Alessandro set the basis for a new realty business in the UK that will facilitate the generation of new production plants within the Med.

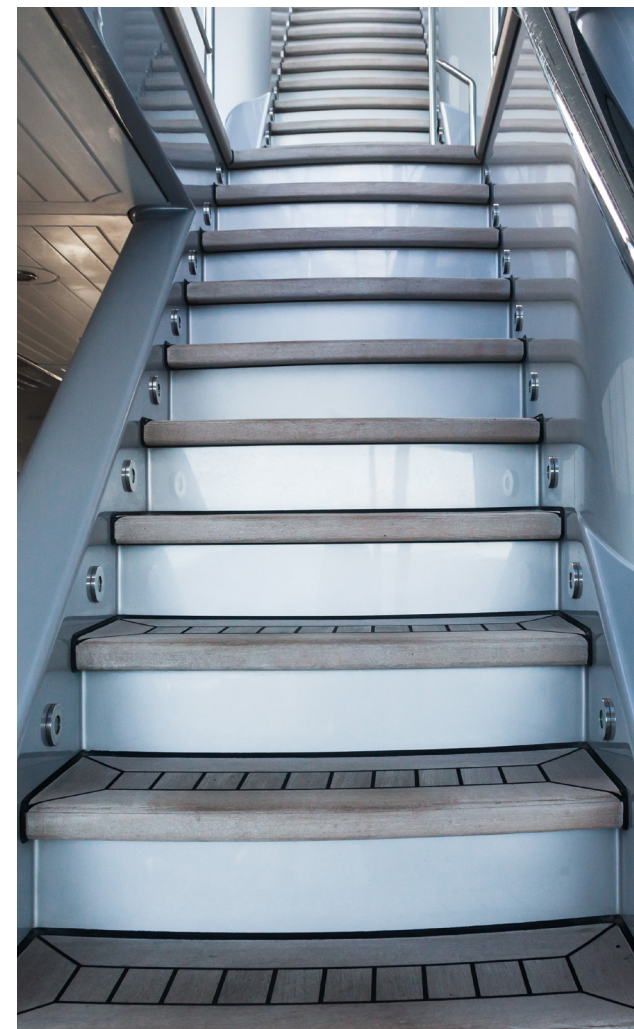
At the heart of his project, there is, solid expertise, attention to detail, high quality standards, allowing the shipyard to best satisfy customer requests, creating excellent and innovative products.

The Group currently includes 6 controlled and associated companies:

- **Cantieri Navali Tureddi Group Spa – Group leader**
- **R.T. Service S.r.l. – Outfitting and services**
- **Yachtcarp S.r.l. – Steel and aluminum carpentry**
- **Lassen Line S.r.l. – Welding and laser cutting**
- **P.B.S. Mixology S.r.l. – Event organisation and management.**
- **Vitruvius Realty LTD.” – International Real Estate.**

We welcome you to consult us for the development of your superyacht custom projects.

TUREDDI





PROJECT Noon 52

Motor yacht



Exterior : Leonardo Cecchi - ArDeMo Y&D

Interior : Leonardo Cecchi - ArDeMoY&D

Length : 52 m

Length at waterline : 48 m

Width, maximum (over-all) : 10.3 m

Beam : 10.6 m

Draft : 2.7 m

Displacement : Full displacement

Guests	Crew	Cabins	Decking	Decks
12	10 + 1	6 + 1	teak	4 + 1



52m

About

NooN 52 is a 52m steel and aluminium motor yacht that combines shape and function creating an elegant and flowing design.

The internal layout features 4 double guest cabins on the LD, a spacious salon with dining area aft on the MD and a media room on the UD. Forward on the MD, two mirror master cabins with private terrace can be modified in a single owner area according to the requests.

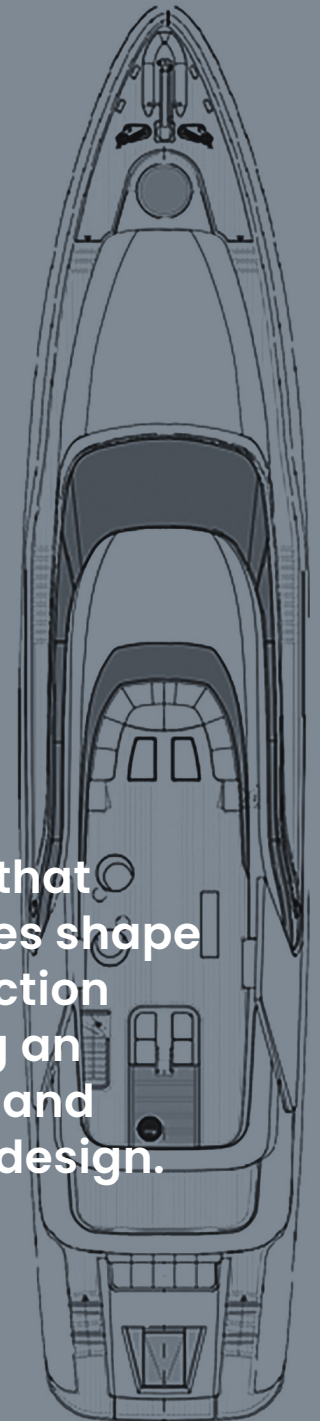
The external areas are designed to maximize the contact with the sea. The rigour of internal layout is opposed to the softness and the sinuous of the external shapes that are created from the movement of the slow and long sea waves, that lull the navigator.

From a technical point of view, NooN 52 features a spacious engine room that can also accommodate hybrid propulsion systems according to the client's requests and needs. The choice of aluminium allows optimal performance in navigation with low consumption and a greater autonomous operation that can be implemented with the integration on board of the hydrogen fuel cell technology diesel/electric to ensure a "zero-emission" navigation.

NooN 52 can accommodate 12 guests in six cabins. The privacy of each guest is guaranteed by the study of separate routes between guests and crew.



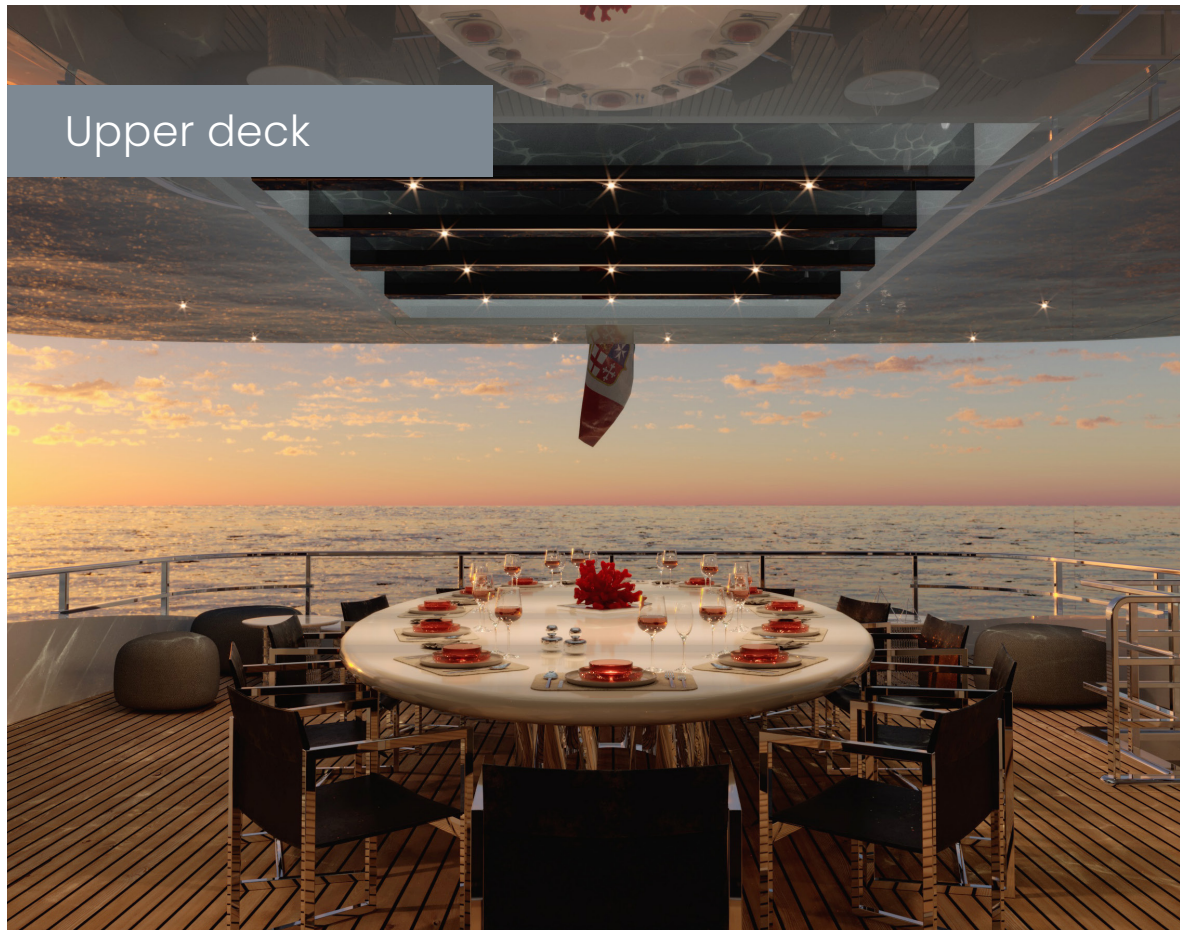
**...yacht that
combines shape
and function
creating an
elegant and
flowing design.**



Sun deck



Upper deck





Type of engine : Diesel / MAN V 12 (x2) TBC

Main generators : Kilo-Pak, 99kW each (x2) TBC

Bow thruster : HRP 90kW, TBC

Stabilisers : Naiad Dynamics, TBC

Maximum speed at 1/3 load : 19,00 knots ($\pm 0,5$ kn)

Cruising speed : 15 knots ($\pm 0,5$ kn)

Range at cruising speed : 3,500 NM

Range at 12 kts economical cruising speed : 6,000 NM

Gross tonnage : approx. 499t



Approximate tank capacities / Litres

Fuel : 105,000

Fresh water : 19,000

Gray water : 5,000

Black water : 3,500

Bilge separator tank : 1,000

Clean lube oil : 400

Sludge oil : 400

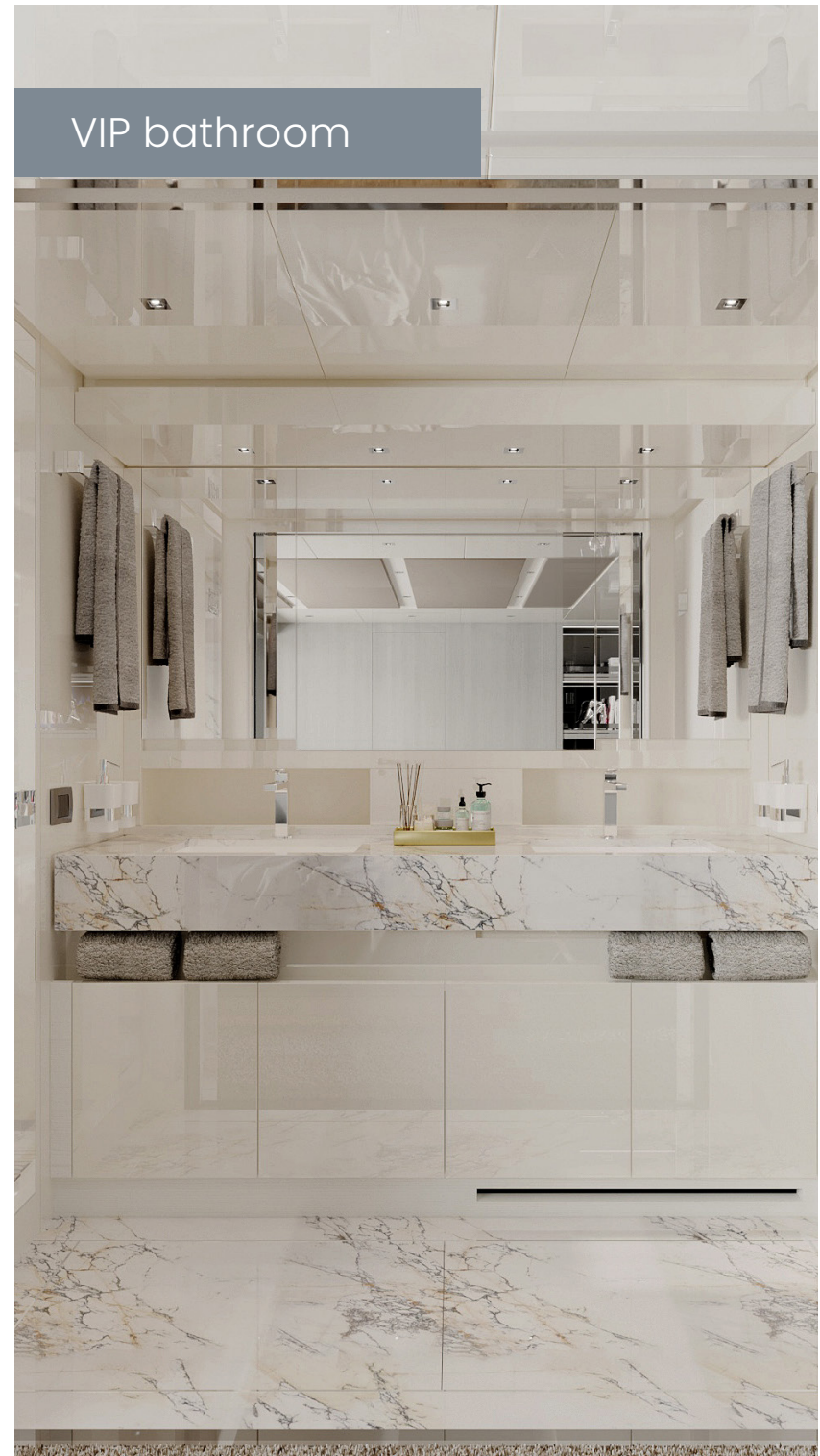
Hydraulic oil : 200

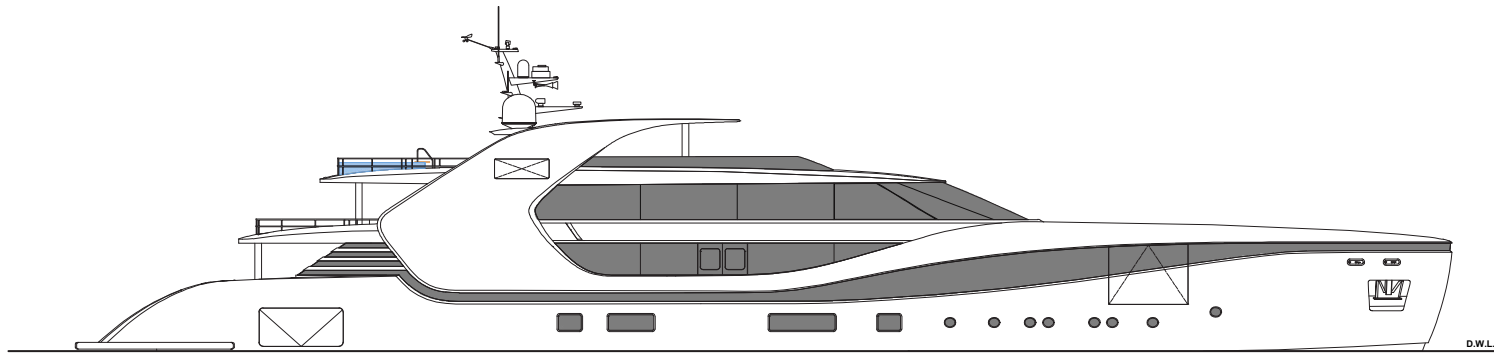


VIP cabin

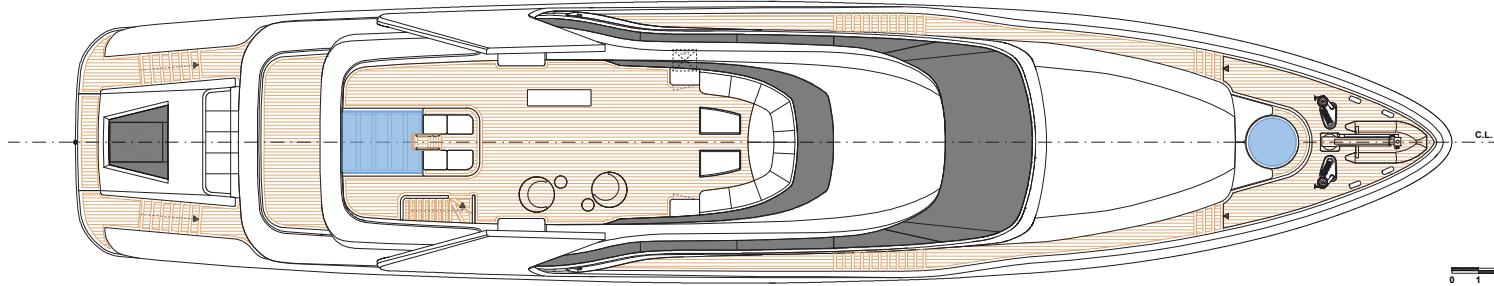


VIP bathroom

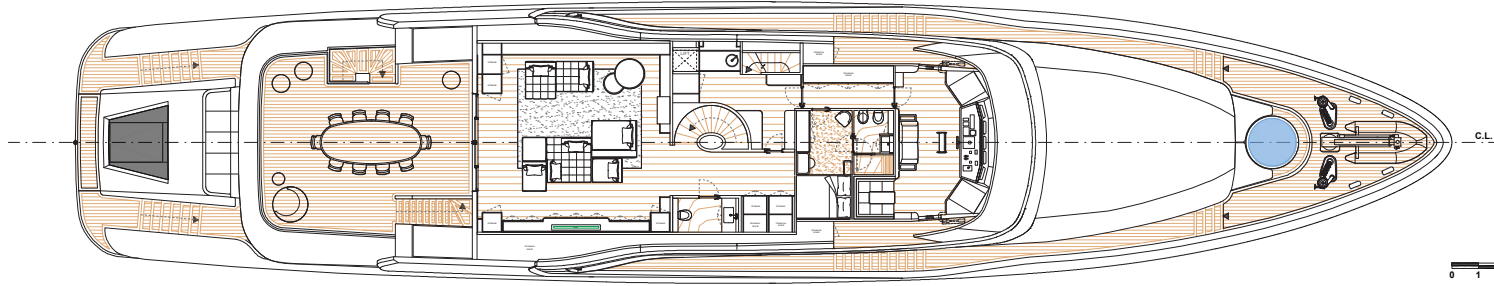




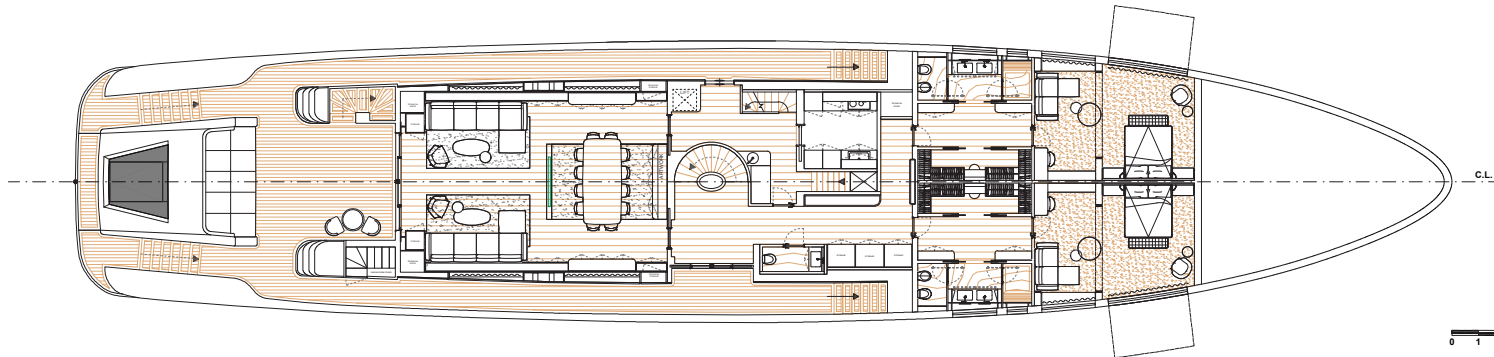
0 1 2 3 4 5 6 7 8 9 10 11 12 13 14 15 16 17 18 19 20 21 22 23 24 25 26 27 28 29 30 31 32 33 34 35 36 37 38 39 40 41 42 43 44 45 46 47 48 49 50 51 52



0 1 2 3 4 5 6 7 8 9 10 11 12 13 14 15 16 17 18 19 20 21 22 23 24 25 26 27 28 29 30 31 32 33 34 35 36 37 38 39 40 41 42 43 44 45 46 47 48 49 50 51 52



0 1 2 3 4 5 6 7 8 9 10 11 12 13 14 15 16 17 18 19 20 21 22 23 24 25 26 27 28 29 30 31 32 33 34 35 36 37 38 39 40 41 42 43 44 45 46 47 48 49 50 51 52



0 1 2 3 4 5 6 7 8 9 10 11 12 13 14 15 16 17 18 19 20 21 22 23 24 25 26 27 28 29 30 31 32 33 34 35 36 37 38 39 40 41 42 43 44 45 46 47 48 49 50 51 52

Rev.	Date	Note	Drawn by

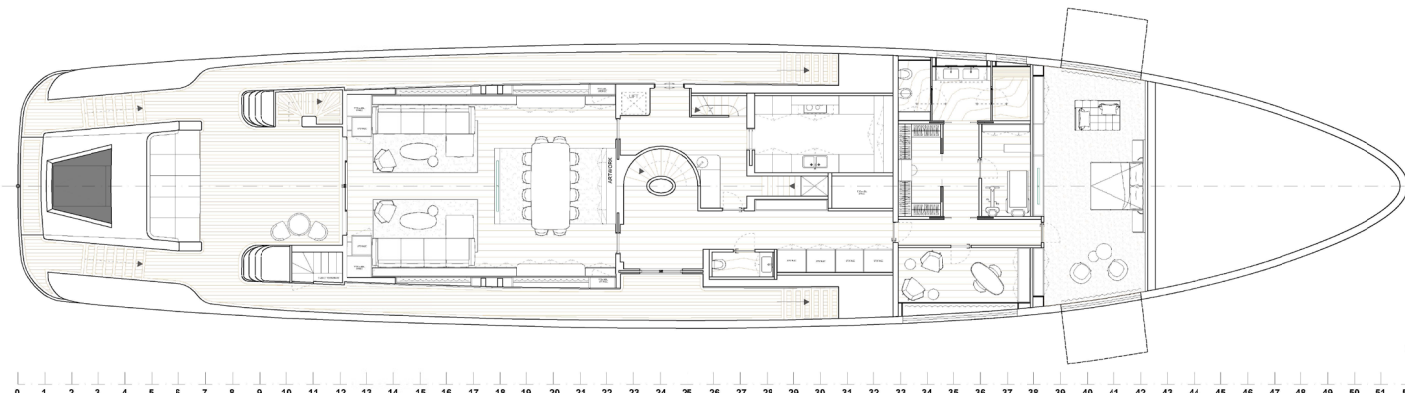
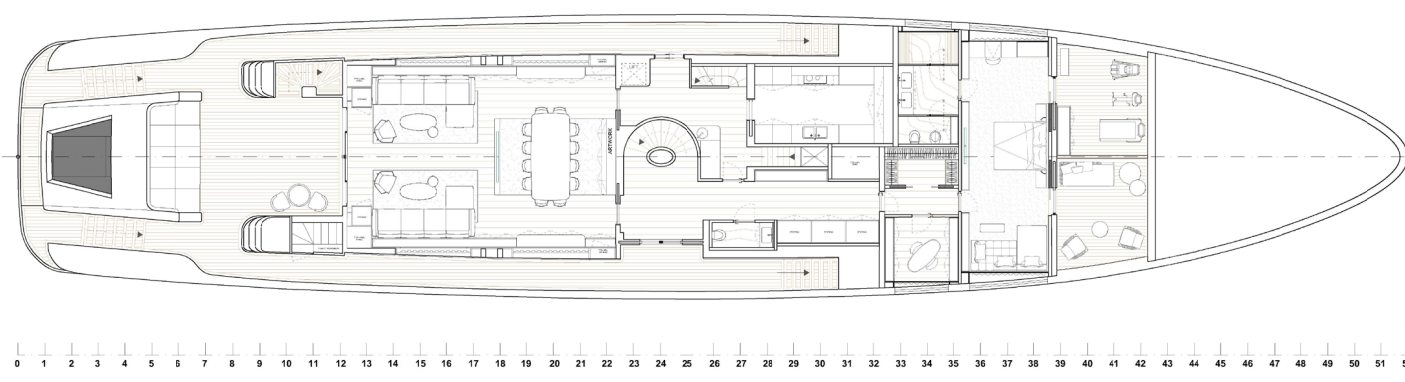
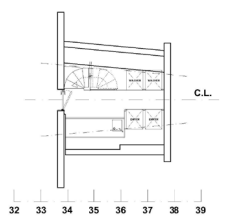
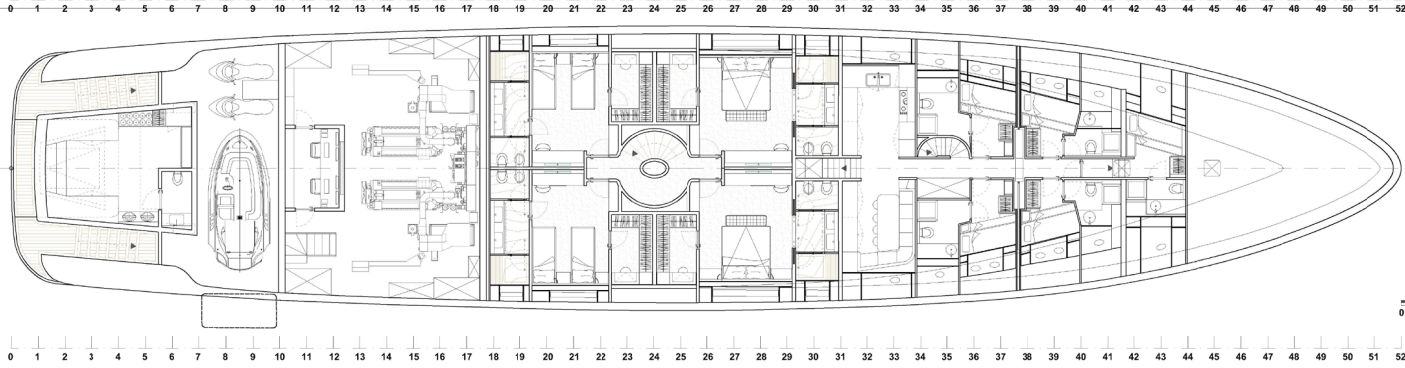


ArDeMo Yacht + Design - Via Calandrino, 6R Firenze - +39 339 5018584 - leonardo@ardemo.it

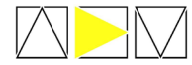
Noon52_00

File name	Paper Size	Date	Scale	Drawn by	Checked by
Noon52_00_gnp00	ISO A1 841x1194 mm	01.12.2021	1/100	L.Cecchi	L.C.
sheet 1/2					

DI QUESTO DISEGNO È VIETATA LA RIPRODUZIONE, LO SFRUTTAMENTO O LA COMUNICAZIONE A TERZI - TUTTI I DIRITTI SONO RISERVATI
REPRODUCTION OR COMMUNICATION OF THIS DRAWING TO THIRD PARTIES IS STRICTLY FORBIDDEN - ALL RIGHTS ARE RESERVED



Rev.	Date	Note	Drawn by



ArDeMo Yacht + Design - Via Calandrino, 6R Firenze - +39 339 5018584 - leonardo@ardemo.it

Noon52_00

File name	Paper Size	Date	Scale	Drawn by	Checked by
Noon52_00_gnp00	ISO A1 841x594mm	01.12.2021	1/100	L.Cecchi	L.C.

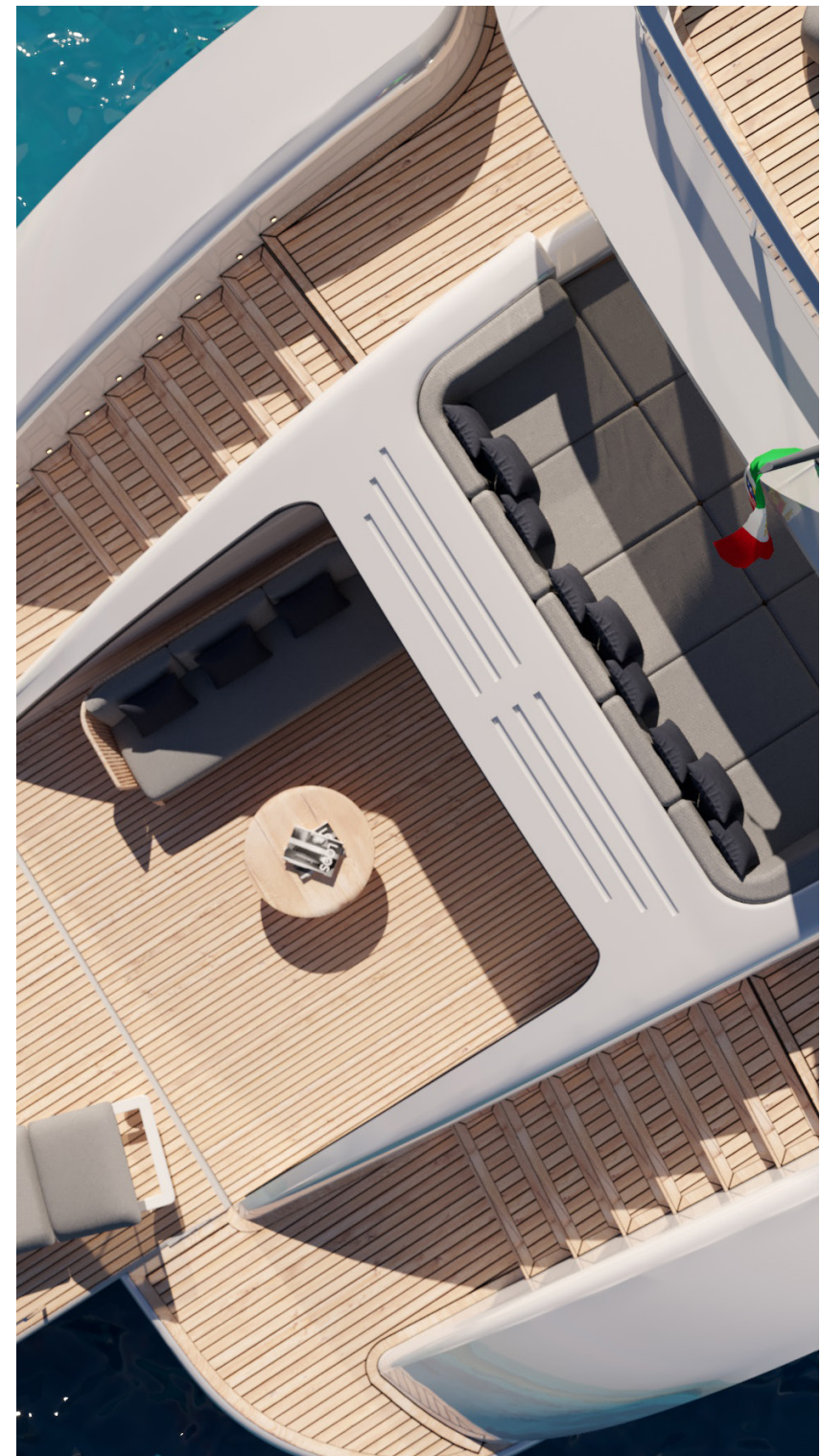
DI QUESTO DISEGNO È VIETATA LA RIPRODUZIONE, L'USO FRUTTATIVO O LA COMUNICAZIONE A TERZI - TUTTI I DIRITTI SONO RISERVATI



All information in this brochure, including technical or performance data, images and drawings, are designer's exclusive property and should be considered as simple indications previously verified with some experts in the sector.

These features, without contractual value, refer to the motoryacht model presented following specific technical and formal designer's decisions.

This document is based on the information available at the time of its publication. Despite our best efforts to ensure the highest possible accuracy, the information contained here may not cover all details and any changes introduced after printing or could describe features not totally achievable.



TUREDDI

☎ +33 7 68 64 02 17

✉ info@cntgroup.it

🌐 cntgroup.it

📍 Via Cavallotti 31,
55049 Viareggio (LU)
Italy